



# GMT MONTHLY MEMBERSHIP PROGRESS REPORT

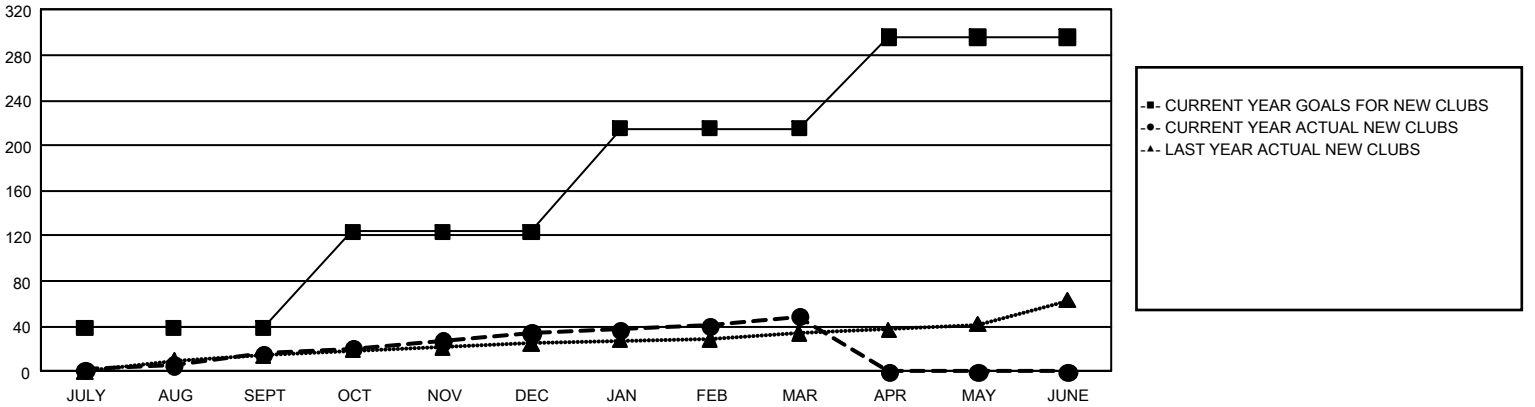
## GAT Constitutional Area 1

Results as of: 3/31/2024

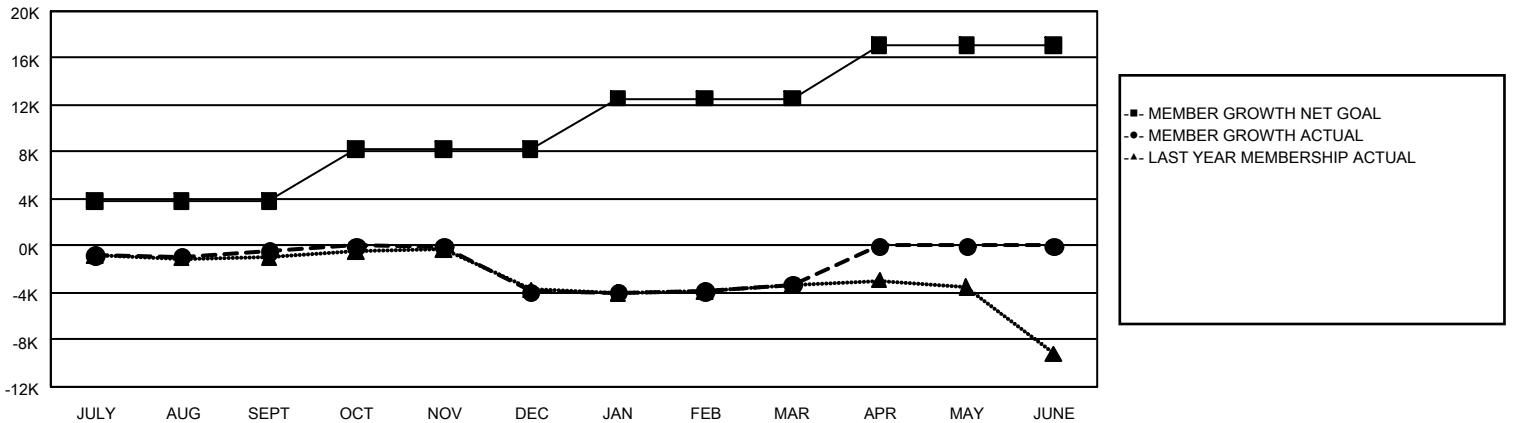
REPORT DOES NOT INCLUDE CLUBS IN UNDISTRICTED AREAS.

Clubs				Members			
RESULTS FOR 2023-2024				RESULTS FOR 2023-2024			
QUARTER	NEW CLUB GOAL	NEW CLUBS	DROPPED CLUBS	QUARTER	MEMBER GROWTH NET GOAL	MEMBER GROWTH ACTUAL	DROPPED MEMBERS ACTUAL (including transfers)
JULY/AUG/SEPT	39	16	62	JULY/AUG/SEPT	3,838	8,134	7,639
OCT/NOV/DEC	85	18	128	OCT/NOV/DEC	4,390	6,976	9,688
JAN/FEB/MAR	91	15	33	JAN/FEB/MAR	4,337	7,825	6,388
APR/MAY/JUNE	81	0	0	APR/MAY/JUNE	4,578	0	0

**GOALS AND ACTUAL NEW CLUBS CUMULATIVE**



**GOALS AND ACTUAL MEMBERS CUMULATIVE**



<b>DROPPED CLUBS: 222</b>	5,517 CLUBS OF 10,129 ADDED 1 OR MORE NEW MEMBERS	<b><u>GENDER DISTRIBUTION</u></b> MALE                    167,374 (63.33%) FEMALE                   96,785 (36.62%)
<b><u>DROPPED MEMBERS</u></b> DECEASED                    3,230 CLUB CANCELLED            1,479 OTHER                         19,006 <hr/> TOTAL                         23,715	<a href="#">CLICK HERE FOR CUMULATIVE MEMBERSHIP DATA</a>	TOTAL FAMILY UNIT MEMBERS                    51,443  FAMILY MEMBERS PAYING HALF DUES                    26,466